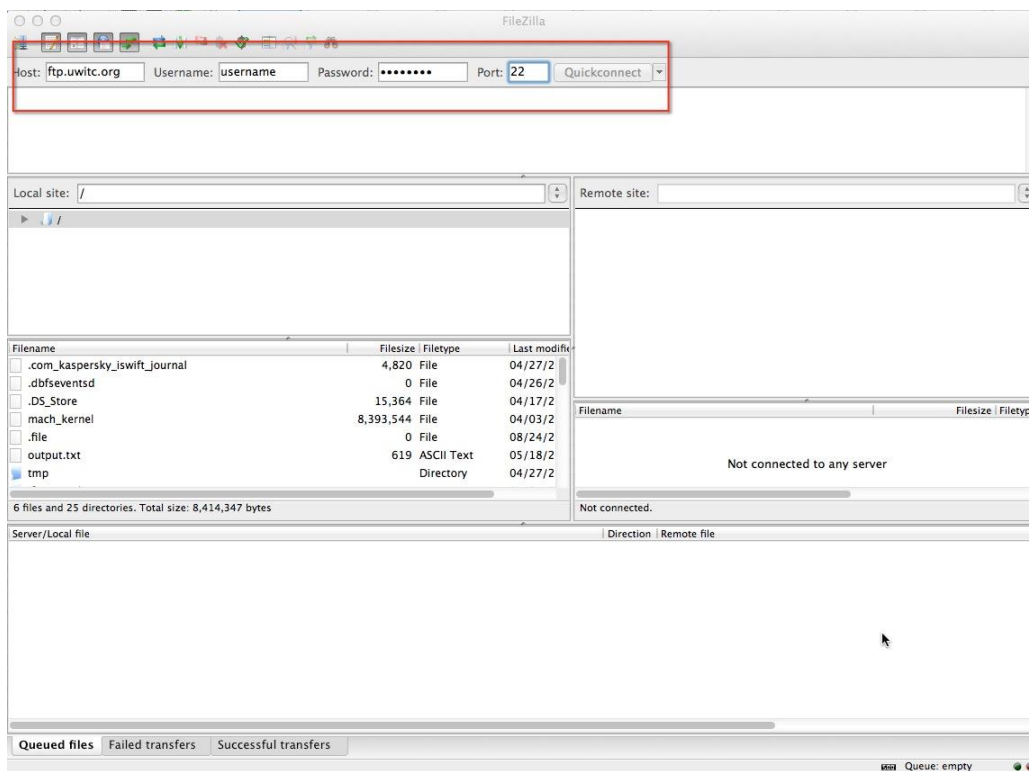


How To: FTP to the UWITC FTP Server

For security reasons, the UWITC's FTP servers will only support SFTP connections as of April 2014. Your old FTP account will no longer work with the new server. If you need a FTP user account (to upload files to ePledge), you will need to put in a ticket to the helpdesk by emailing ticket@uwitc.org

To connect, you will need to use a FTP client that supports SFTP (port 22). We suggest FileZilla that can be downloaded at <http://filezilla-project.org> onto your local computer or accessed through your Citrix desktop.

In the top bar of FileZilla you will see a place for the host address, username, password, and port number (red box below).



If you are connecting from outside the UWITC network, you should connect to host `FTP.UWITC.ORG`. If you are connecting from inside of the UWITC network, you should connect to host `192.168.17.181`.

The username and password ARE NOT the same as your Citrix username and password. It is a dedicated username and password that is only used for the FTP system.

The port number will always be 22.

If you have any trouble with the steps in this article or need further assistance, please submit a help desk ticket or call 1-855-UWITC-4U.